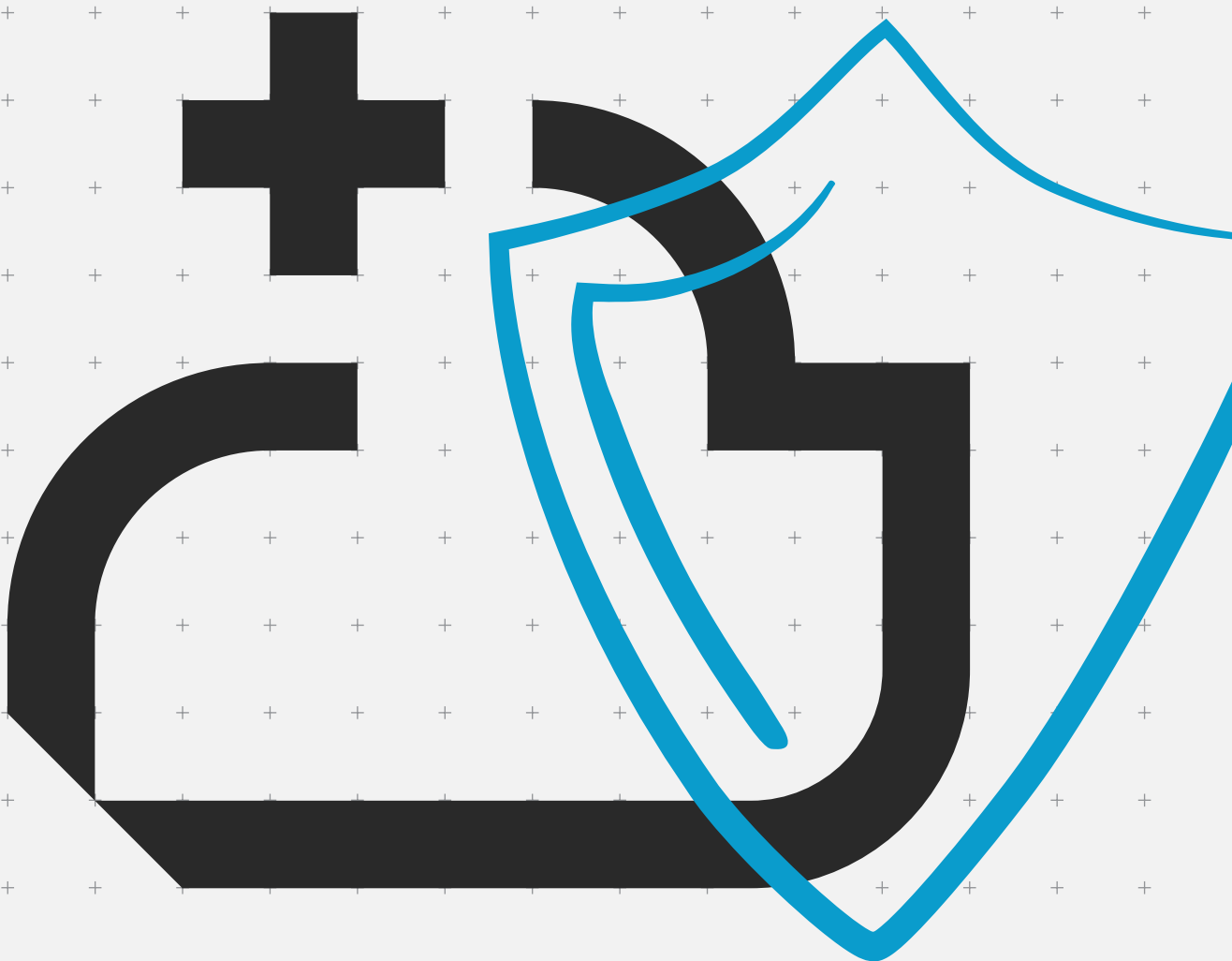


# Print and scan securely from Kyocera's cloud native SaaS solution.

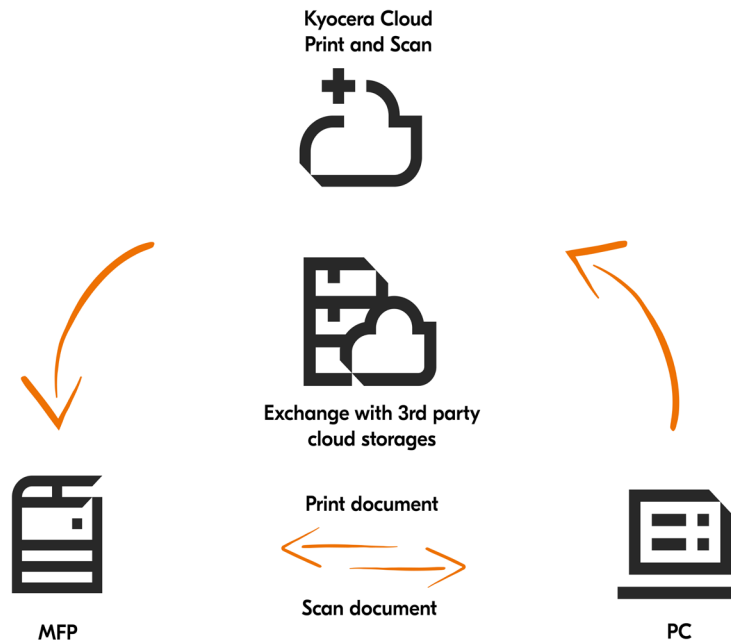
Manage the costs of your print environment and release your print jobs securely from the cloud using Kyocera Cloud Print and Scan. Perfect for agile workspaces and hybrid workers needing to print from multiple locations and scan directly to the cloud.



## Introduction

Kyocera would like to introduce our new native cloud print management tool built on our cloud platform technology that allows you to optimise your company's printing costs. Kyocera Cloud Print and Scan increases the flexibility and features of your print environment and removes the costs of on-site servers by managing your Kyocera devices in the Cloud.

By moving your print server to the cloud, you reduce the costs associated with having an on-premise server while also, providing your businesses with the perfect solution when it comes to increased document security and management of print costs. Kyocera Cloud Print and Scan also reduces your operational costs by using a high class multi-tenant architecture hosted in the Cloud with Amazon Web Services (AWS). Thanks to the embedded Print&Follow™ function, the documents sent to the MFP will remain in the system and can be securely printed from any device at any time.



## Your potential business challenges



**Cost** - My current on-premise print management solution involves high infrastructure and operational costs.



**Security** - My business moving to the cloud could be potentially harmed by the theft of confidential data.



**Inefficiency** - My business needs document storage in the cloud, for easy accessibility for employees, at any time.



**Sustainability** - A continued focus on sustainability goals means that I am looking for new methods to reduce CO2 emissions.

## Kyocera's solution



**Cost Reduction** - By using Kyocera Cloud Print and Scan, you are only paying for the service (SaaS), and no other initial investment is needed.



**Enhanced security** - Using the Client Spooling function, the print job can stay within the customer network and can be released from any device - only the metadata will be stored in the Cloud.



**Improved productivity** - With Kyocera Cloud Print and Scan, you can scan directly to your cloud storage destination from the touch panel of your device.

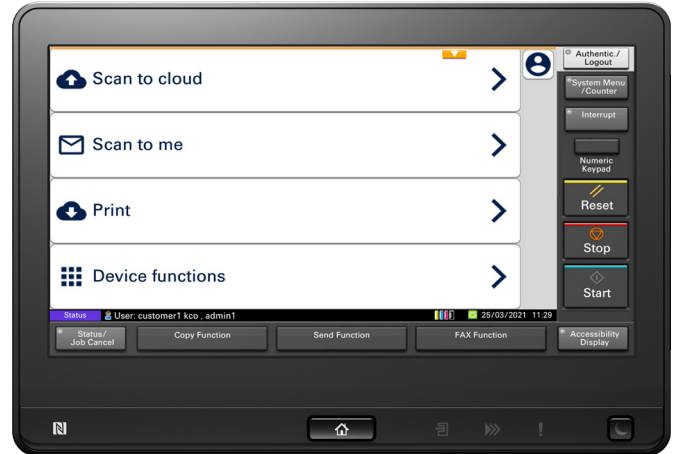


**Minimised waste** - centralised and consolidated hosting services lead to a reduced carbon footprint that is generated by your company.

## Print policies with Kyocera Cloud Print and Scan

Create policies and allocate them to different user groups to reduce print cost in your business. For example, assigning only black & white for Finance and color print for marketing within your organization. Moreover, quotas can be implemented in order to have an optimal cost management for a group of employees, for a specific department or across the organization as a whole.

Printing and scanning functions are intuitive and easy to use. Kyocera Cloud Print and Scan is embedded on the touch screen control panel of Kyocera HyPAS devices. Secure authentication is also available by login using ID card or username and password.



## Key Features & Specifications



**Multi-tenant software** - Reduce your operational costs using the multi-tenant software hosted in the cloud with Amazon Web Services (AWS).



**Multiple scan options** - Scan documents to users' email and to KCPS server in the cloud.



**Security** - Job release only after user authentication with ID card or username and password.



**3rd party Cloud storage integration** Print from or scan to connected 3rd party cloud storage: Box.com™, Google Drive™ and OneDrive™.



**Print Quota** - Assign and manage print quotas to a group of users in order to reduce your total print cost.



**Print policies** - Assign the desired print policies to a group of users in order to improve their print behaviour and optimise print cost management.



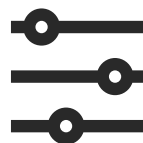
**Actionable Reporting** - Variety of reports helping you to take the right decision in managing your business.



**Local spooling** - The job can be released from any Kyocera compatible HyPAS device within the customer network. \*



**Copy Function** - Users can benefit from the copy function of the device, and this will still be counted within their print quota (the user stays within their print limit).



**System Requirements** -  
Client Operating System:  
Windows 8 or later  
MacOS 10.13 or later  
Browser support: Google Chrome

\* more information about compatible devices on [www.kyoceradocumentsolutions.eu](http://www.kyoceradocumentsolutions.eu)

Kyocera Document Solutions has championed innovative technology since 1959. We enable our customers to turn information into knowledge, excel at learning and surpass others. With professional expertise and a culture of empathetic partnership, we help organisations put knowledge to work to drive change.

**KYOCERA Document Solutions (U.K.) Limited**

Eldon Court  
75-77 London Road  
Reading  
Berkshire RG1 5BS

Tel: 03330 151855  
e: [info@duk.kyocera.com](mailto:info@duk.kyocera.com)

[kyoceradocumentsolutions.co.uk](http://kyoceradocumentsolutions.co.uk)

**A Kyocera Group UK Company**

Annodata Ltd.  
The Maylands Building, Maylands Avenue  
Hemel Hempstead  
Hertfordshire HP2 7TG

Tel: 03330 151856  
e: [sales@duk.kyocera.com](mailto:sales@duk.kyocera.com)

[kyocera-annodata.co.uk](http://kyocera-annodata.co.uk)

